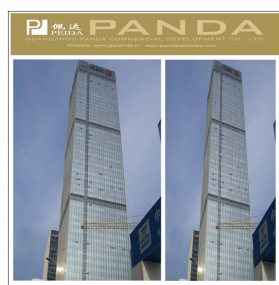


## Magnesium Oxide Board

- ◆ Excellent fire-proof and moisture-proof performance
- ◆ Good heat and sound insulation
- ◆ High strength, Stable dimensions
- ◆ Durability and long service life ect



## Specification

| Item          | Unit | Test Value             |
|---------------|------|------------------------|
| Standard Size | mm   | 1200*2400 or 1220*2440 |
| Max Length    | mm   | 1220                   |
| Max Width     | mm   | 3000                   |
| Thickness     | mm   | 3-25                   |



## Technical Parameters

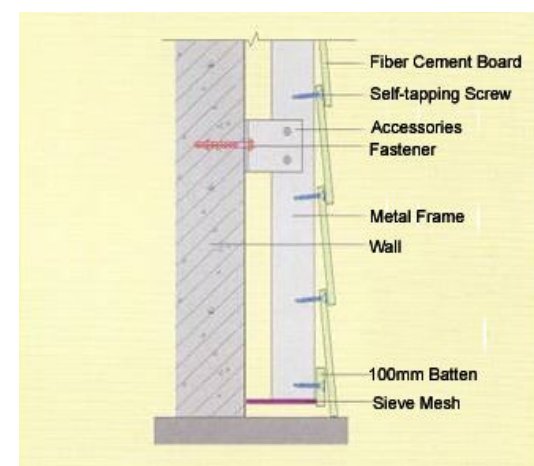
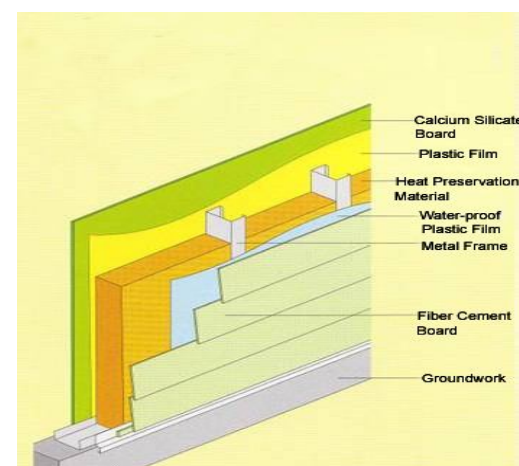
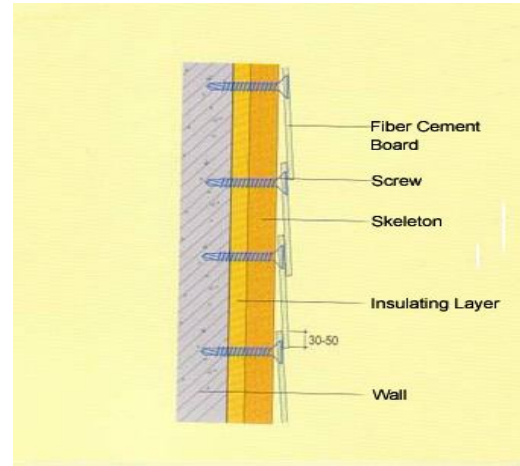
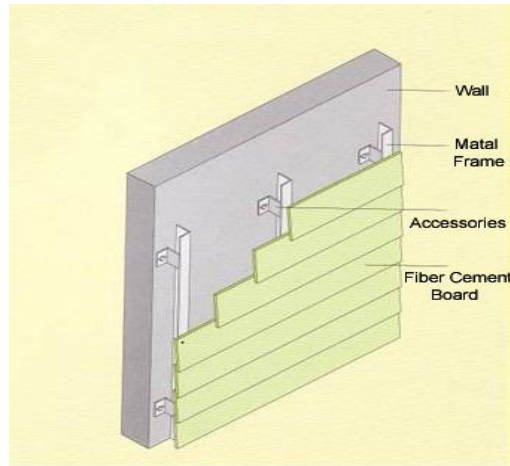
| Items                | Unit              | Standard Value                | Test Value  |
|----------------------|-------------------|-------------------------------|---|
| Raw Materials        | /                 | /                             | magnesium oxide, magnesium chloride, perlite, fiber glass mesh, wood fibers |
| Standard Size        | mm                |                               | 1200*2400 or 1220*2440  |
| Max Width            | mm                |                               | 1220  |
| Max Length           | mm                |                               | 3000  |
| Thickness            | mm                |                               | 3-25mm  |
| Density              | g/cm <sup>3</sup> |                               | 0.90-0.95   |
| Color                |                   |                               |   |
| Water Content        |                   |                               | ≤10   |
| Water Absorption     |                   |                               | ≤40   |
| Fire Resistance      |                   |                               | Incombustibility A1 Class   |
| Thermal Conductivity | W/MK              |                               | Average≤0.20  |
| Bending Strength     | N/mm <sup>2</sup> | Transverse                    | ≥8.5  |
|                      |                   | Vertical                      | ≥6.0  |
| Radioactivity        | /                 | Conforming to GB8624- A Class |   |
| Certification        | /                 | SGS                           |   |
| Packing              | /                 | 1:Wooden pallet 2:in bulk     |   |



## Certificate



## Installation



**GUANGZHOU PANDA COMMERCIAL DEVELOPMENT CO.,LTD.**  
 Unit 617, 6/F., Fuying International Building, No.166 Changgang Road Central, Guangzhou  
 Tel: 86-20-6236 1215 Fax: 86-20-6236 1237  
 E-mail: [sales@gzpanda.cn](mailto:sales@gzpanda.cn) Website: <http://www.gzpanda.cn>